



## SOCIETY PACKAGES

A minimum of 8 Players for Packages A,B,C	
<p><b>Package A</b> Coffee and Bacon Roll on Arrival</p> <p>18 holes between 9.00am and 11.30am</p> <p>2 Course Lunch</p> <p><b>£42.00 Per Person for 8 to 29 players</b></p> <p><b>£37.00 Per Person for 30+ players</b></p>	<p><b>Package B</b> Soup, Sandwiches and Coffee on Arrival</p> <p>18 Holes between 1.00pm and 3.00pm</p> <p>2 Course Dinner</p> <p><b>£44.00 Per Person for 8 to 29 players</b></p> <p><b>£39.00 Per Person for 30+ players</b></p>
<p><b>Package C</b> Coffee and Bacon Roll on Arrival</p> <p>9 Holes between 9.00am and 11.30am</p> <p>Soup and Sandwiches</p> <p>18 Holes</p> <p>2 Course Dinner</p> <p><b>£51.00 Per Person for 8 to 29 players</b></p> <p><b>£46.00 Per Person for 30+ players</b></p>	<p><b>Monday Morning Society Special</b> Coffee and Bacon Roll on Arrival</p> <p>18 Holes between 9.00am and 11.30am</p> <p>2 Course Lunch</p> <p><b>£30.00 Per Person for 8 to 29 players</b></p> <p><b>£27.00 Per Person for 30+ players</b></p>

Unless otherwise specified, Packages A, B & C are available from

1st April 2010 to 31st October 2010

Monday, Wednesday and Friday.

Terms and conditions apply. All bookings are subject to availability. A non-refundable deposit is required within 14 days to confirm your booking. Final numbers for golf and catering are required 5 days in advance. Balance of payment to be taken on arrival.

**Bookings:**

For availability and tee times, please contact our **Professional Jason Peel on 0161 643 7094**



## SOCIETY MENU OPTIONS

Please choose one option only from the relevant section for all of your society. Two courses can be either starter and main course, or main course and dessert, but the combination must be the same for all players.

### Starters

Chefs Soup of the Day  
Traditional Prawn Cocktail  
Fanned Melon with Fruit Coulis  
Farmhouse Pate served with Toast

### Mains

Braised Steak in Red Wine with New Potatoes and Vegetables  
Steak and Mushroom Pie with Chips and Vegetables  
NMGC Homemade Toad in the Hole with Onion Gravy, Mash & Vegetables  
Chicken Tikka with Rice and Naan Bread  
Baked Cod Fillet with Chips and Garden Peas  
Pork Chop with Chips and Vegetables

### Desserts

Profiteroles filled with cream and smothered with Chocolate sauce  
Dutch Apple Pie or Homemade Fruit Crumble with Custard  
Vanilla Cheesecake with Fruit Compote  
Rich Chocolate Torte with Cream

### ADDITIONS

One extra course to your meal add	£3.50
Full English Breakfast instead of Bacon Rolls add	£3.50
Cold Buffet instead of Soup & Sandwiches add	£4.00
Extra Tea & Coffee per person	£1.00



**Society Golf Day – Booking Form**

I confirm the above booking as advised and enclose a (non-refundable) deposit of £100.

<b>Society Name</b>		
<b>Contact Name</b>		
<b>Contact Address</b>		
<b>Telephone Number</b>		
<b>E-mail address</b>		
<b>Package Required (Tick one only)</b>	Package A @ £42.00 per person @ £37.00 per person  Package B @ £44.00 per person @ £39.00 per person  Package C @ £51.00 per person @ £46. 00 per person  Monday Special @ £30 per person  Sunday Special @ £49.00 per person @ £42.00 per person	
<b>Numbers Attending</b>		
<b>Booking Date</b>		
<b>Tee Time Requests</b>	AM	PM
<b>Further requests</b>		

Definite numbers for catering and choice of menu options must be received 5 days before the Society Day. Changes in numbers after this time will result in the full catering costs being incurred.

Signature: \_\_\_\_\_ Date: \_\_\_\_\_

All bookings are provisional until the completed form and deposit are received. Provisional bookings will not be guaranteed.



## **Course and Club Regulations and Etiquette**

Welcome to North Manchester Golf Club.

We feel it is our duty to ensure that the standards of dress and behaviour in the clubhouse and on the course are kept as high as possible. Making yourself aware of the rules will avoid any embarrassment to you or to the officials and members of the club. Naturally we wish every golfer who plays here to enjoy our course and the facilities to the full.

### **Dress rules on the course**

- No denim jeans or other forms of denim wear.
- No wearing of tee shirts and shirts without collars or sleeves.
- No training, track or sports shoes.
- No track suits.
- No wearing of trousers inside socks unless specifically designed for the purpose.
- Tailored shorts are allowed on the course but not in the clubhouse.

### **Rules in the Clubhouse**

- No training track or sports shoes.
- Shorts are not allowed in the Clubhouse.
- No denim jeans, denim wear or track / shell suits.
- No shirts without sleeves or collars.
- Bags, shoes and other equipment are not to be left in the entrance hall or passageways.
- Guests of members, other than those paying temporary membership fees are required by law to sign the Visitors Book.

### **Tee Reservations**

- Members only 12.00 noon until 1.30pm weekdays.
- Ladies only: Thursdays 11.00am to 1.00pm with priority on the course.

### **Course Care and Player Consideration**

- Please leave our course in such a way to ensure that it is presented to others to the standard you would expect to find it
- Give other players in front and behind you the consideration they deserve and keep the flow of play continuous by calling players through if you lose more than one hole on the players in front
- Please repair bunkers and pitch marks on the green.
- All visitors to sign the Visitors Book and pay green fees before playing.
- Temporary membership tags to be clearly visible on golf bags.
- We reserve the right to request any visitors not complying with the rules to leave the course and / or Clubhouse.



### **Address**

The New North Manchester Golf Club  
Ltd.  
Rhodes House,  
Manchester Old Road,  
Middleton,  
Manchester.  
M24 4PE

### **General Managers Office**

General Manager: Mr Gerard Heaslip [tee@nmgc.co.uk](mailto:tee@nmgc.co.uk)  
[tee@northmanchestergolfclub.co.uk](mailto:tee@northmanchestergolfclub.co.uk)

Administrator: Mrs Carmen Daw [admin@northmanchestergolfclub.co.uk](mailto:admin@northmanchestergolfclub.co.uk)  
Telephone 0161 643 9033  
Fax 0161 643 7775

### **Steward**

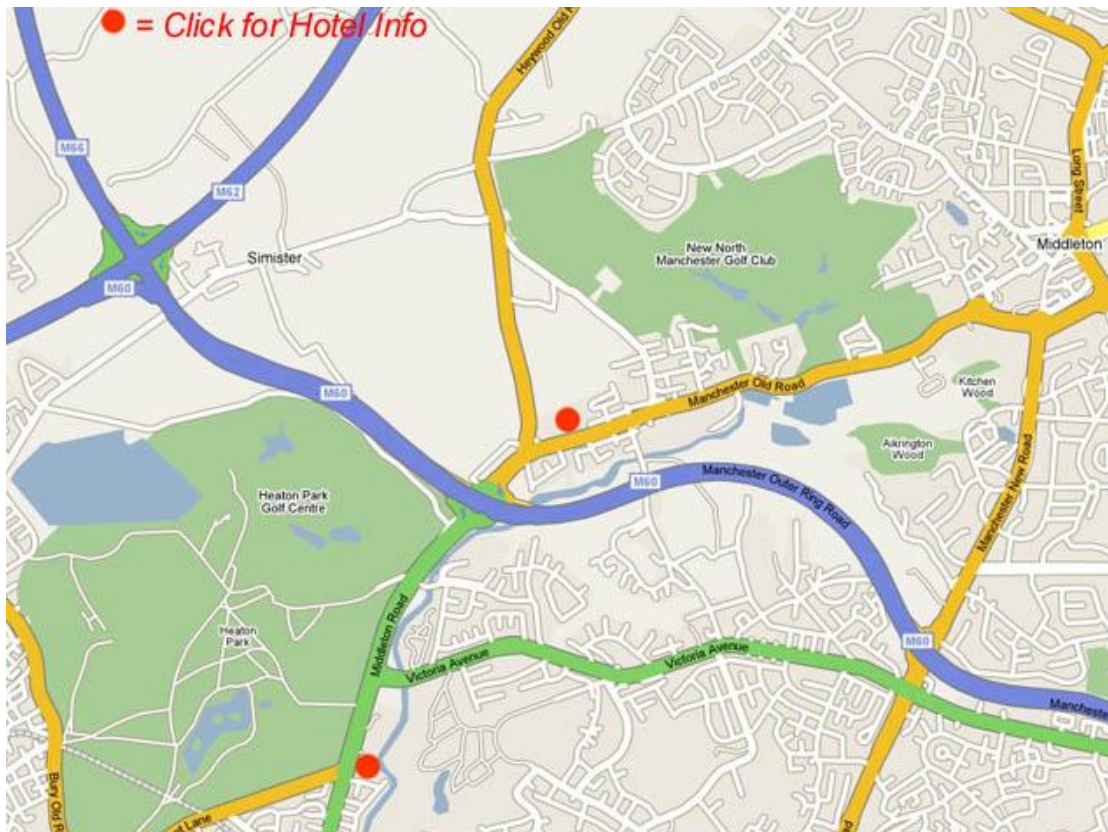
Steward: Mr Callum  
Cameron

### **Professional's Shop**

Pro: Mr Jason Peel [professional@nmgc.co.uk](mailto:professional@nmgc.co.uk)  
Telephone 0161 643 7094



**How to find us:**



### **How to Find Us**

Located just 1 mile from Junction 19 on the M60 on the A576 to Middleton, North Manchester Golf Club could not be more convenient for Golfers traveling from far and wide. Only 1 junction from Junction 18 of the M62 and with direct road links into Manchester, Leeds and Liverpool, the course is a mere 30 minutes from Manchester International Airport via the M56 and M60 motorways.



**Dear Society Organiser**

Please find attached the 2010 Society Packages available at North Manchester Golf Club.

In the first instance please contact Jason Peel, our Professional, for availability and tee times. A provisional booking will be held for 14 days until confirmed with the enclosed Society Booking Form.

North Manchester Golf Club must receive a completed form together with the non-refundable deposit to secure the booking.

Final numbers must be received no later than close of business (17.00hrs) 5 working days prior to the eve of your event. This number is the minimum that will be charged for on the day of the event. Menu choices, if not known at the time of completing the booking form, must also be confirmed no later than 5 working days prior to the event.

The balance of payment is to be paid prior to commencement of play on the day of the event at the Professional Shop, by cash or by cheque made payable to NNMGC Ltd.

We look forward to welcoming you to North Manchester Golf Club.

**Gerard Heaslip**  
**General Manager**



### **Sunday Package**

A minimum of 8 Players for Package

#### **Special Summer Package**

Soup, sandwiches and Coffee on Arrival

18 Holes between 1.15pm and 3.00pm

2 Course Evening Meal & Coffee

**£49.00 Per Person for 8 to 29 players**

**£42.00 Per Person for 30+ players**

\* Morning play is by prior arrangement only and subject to £2.00 per person additional charge if available

Unless otherwise specified, the Sunday Package is available from

1st April 2010 to 31st September 2010

Terms and conditions apply. All bookings are subject to availability. A non-refundable deposit is required within 14 days to confirm your booking. Final numbers for golf and catering are required 5 days in advance. Balance of payment to be taken on arrival.

#### **Bookings:**

For availability and tee times, please contact our **Professional Jason Peel on 0161 643 7094**